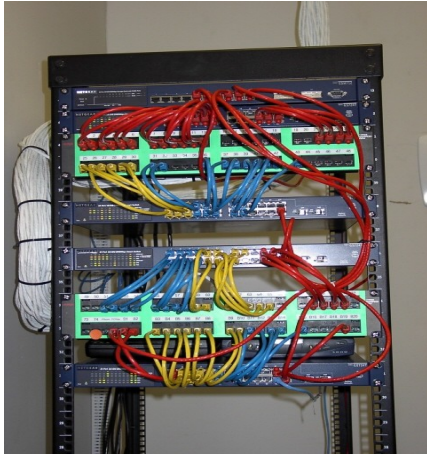


FASTLINK

www.fastlinkcabling.com

Professional and Affordable
Data & Voice Wiring Services 1-877-216-9696

Cat5e | Cat6 | Multimode Fiber Optic Installation



CABLE INSTALLER / CONTRACTOR
SERVING ALL OF NEW JERSEY AND EASTERN PA
Contact us for a FREE Site Survey
Email: andrew@fastlinkcabling.com

COMPLETE OFFICE & WAREHOUSE WIRING SERVICES

- REPAIR & INSTALLATION OF CATEGORY 5E / 6 DATA & VOICE CABLE
 - TELEPHONE SYSTEM EXTENSION WIRING; DIGITAL | VOIP | POE
- REPAIR AND INSTALLATION OF MULTI AND SINGLE MODE FIBER OPTIC CABLE
 - SECURE ARMORED FIBER OPTICS PATCH CABLES
- PROFESSIONAL 110 TERMINATION OF PATCH PANELS & RJ45 DATA JACKS
- SALES & INSTALLATION OF LADDER RACK SYSTEMS & DATA / SERVER CABINETS
 - WHOLESALE TO CORPORATE BUYERS CAT5E / CAT6 PATCH CABLES
 - 19" WIRE MANAGEMENT SYSTEMS FOR DATA CENTERS
- NJ BUILDING PERMIT SERVICE FOR BUILD-OUTS AND NEW CONSTRUCTION
- RE-TERMINATION AND REFURBISHMENT OF EXISTING INFRASTRUCTURE SYSTEMS
 - FLUKE ® TESTING FOR GIGABIT ETHERNET AND LINE CERTIFICATION

[CONTACT US](#)

Servicing the following areas in Mercer & Middlesex County, New Jersey | Services also available in other NJ Counties and Philadelphia Metro Area
[East Windsor Township](#) | [Ewing Township](#) | [Hamilton Township](#) | [Mercerville-Hamilton Square](#) | [White Horse](#) | [Yardville-Groveville](#) | [Hightstown](#) | [Hopewell Borough](#) | [Hopewell Township](#) | [Titusville](#) | [Lawrence Township](#) | [Lawrenceville](#) | [Pennington](#) | [PrincetonBorough](#) | [Princeton Township](#) | [Princeton North](#) | [Robbinsville Township](#) | [Robbinsville](#) | [Windsor Trenton](#) | [West Windsor Township](#) | [Princeton Junction](#) | [Carteret](#) | [Cranbury Township](#) | [Dunellen](#) | [East Brunswick](#) | [Edison](#) | [Helmetta](#) | [Highland Park](#) | [Jamesburg](#) | [Metuchen](#) | [Middlesex](#) | [Milltown](#) | [Monroe](#) | [Middlesex County](#) | [Monroe Township](#) | [Clearbrook](#) | [New Brunswick](#) | [North Brunswick](#) | [Old Bridge](#) | [Brownville](#) | [Laurence Harbor](#) | [Madison Park](#) | [Perth Amboy](#) | [Piscataway](#) | [Plainsboro](#) | [Plainsboro](#) | [Princeton Meadows](#) | [Sayreville](#) | [South Amboy](#) | [Mechanicsville](#) | [South Brunswick](#) | [Dayton](#) | [Kendall Park](#) | [Kingston](#) | [Monmouth Junction](#) | [South Plainfield](#) | [South River](#) | [Spotswood](#) | [Woodbridge](#) | [Avenel](#) | [Colonia](#) | [Fords](#) | [Hopelawn](#) | [Iselein](#) | [Keasbey](#) | [Menlo Park Terrace](#) | [Menlo Park](#) | [Port Reading](#) | [Sewaren](#) | [Woodbridge](#)